

## GOBI+ 640 SERIES

### Thermal LWIR Camera

- LWIR uncooled camera with 640 x 480 resolution
- Microbolometer detector



### SMALL, HIGH PERFORMANCE UNCOOLED THERMAL CAMERA

The Gobi+ 640 series is based on an uncooled microbolometer detector with a 640 x 480 pixel resolution.

The Gobi+ 640 offers frame rates up to 60 Hz and lower detector NETD options (<30 mK available upon request)

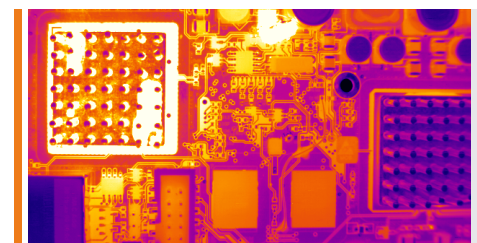
The modules come with either a CameraLink or GigE Vision interface.

### DESIGNED FOR USE IN

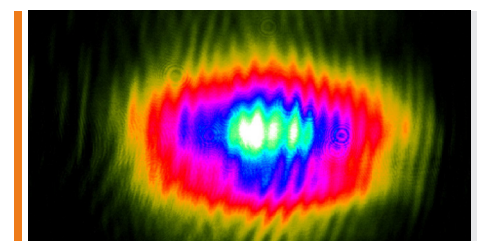
- Scientific & Advanced research
- Medical
- Process Monitoring

### ADVANTAGES

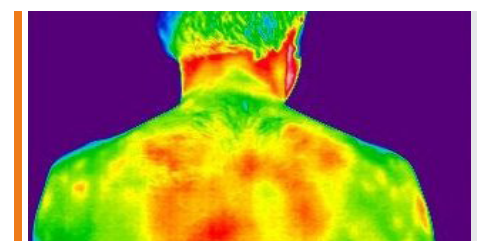
- Compact size
- Easy connectivity via multiple interfaces
- Frame rates up to 60 Hz
- Lower detector NETD options (<30 mK available upon request)
- Temperature calibrations for thermographic applications



PCB Inspection



Laser beam analysis



Medical: infection detection

## SPECIFICATIONS

Camera Specifications	Gobi+ 640 CL	Gobi+ 640 GigE Gobi+ 640 GigE (9Hz)
<b>Mechanical specifications</b>		
Camera dimensions (width x height x length) [mm] (approx.)	49 x 49 x 62	49 x 49 x 79
Optical interface	M42 or M34 x 0.75	
Camera weight [gr]	208	263
Connector GigE	-	RJ-45
Connector CameraLink	Standard SDR	-
Connector power	Hirose HR10-7R-SA[73]	
Connector trigger	SMA	
<b>Environmental &amp; power specifications</b>		
Ambient operating temperature range [°C]	From -40 to +60	
Storage temperature [°C]	From -40 to +85	
Power consumption [W]	2.9	4.6
Power supply voltage	DC 12 V	DC 12 V or PoE [Power over Ethernet]
Shock	40 g, 11 ms, MIL-STD810G/MIL-STD883J	
Vibration	5 g [20 - 2000 Hz], MIL-STD810G/MIL-STD883	
IP Rating	IP 40	
Regulatory compliance	CE, RoHS	
<b>Electro-optical specifications</b>		
Image format [pixels]	640 x 480	
Pixel pitch [µm]	17	
Detector type	a-Si microbolometer	
Integration type	Rolling shutter	
Active area and diagonal [mm]	10.88 x 8.16 [13.6 diagonal]	
Detector NETD [Noise Equivalent Temperature Difference] [mK]	<50 [at 30 Hz, 300 K, F/1] [<30 mK available upon request]	
Spectral range [µm]	8 - 14	
Pixel operability	>99.5%	
Max frame rate [Hz] [full frame]	60	60 [or 9]
Integration time range [µs]	1 - 80	
Region of interest	Yes	
Min region size [pixels]	160 x 120	
Analog-to-Digital [ADC] [bits]	16	
Command and control	CameraLink	GigE Vision
Digital output format	16 bit base CameraLink	16 bit base GigE Vision
Trigger	In or out via SMA or CL-CC1 [configurable]	In or out via SMA [configurable][not for 9 Hz]
<b>Product selector guide</b>		
Part number	XEN-000645	XEN-000646
		XEN-000647 [9 Hz]

XDS.018.05 | Information furnished by Xenics is believed to be reliable. However, no responsibility is assumed for possible inaccuracies or omissions. Specifications are typical values and subject to change without notice. This information supersedes all previously supplied information.

**Envisionate LLC**

Your Local Distributor for Xenics Products

Phone (609) 680-4394

Email [mark.christenson@envisionate.net](mailto:mark.christenson@envisionate.net)

[www.envisionate.net](http://www.envisionate.net) [www.xenics.com](http://www.xenics.com)

  
Infrared Solutions  
ISO 9001:2015